

Fitting Your Product:

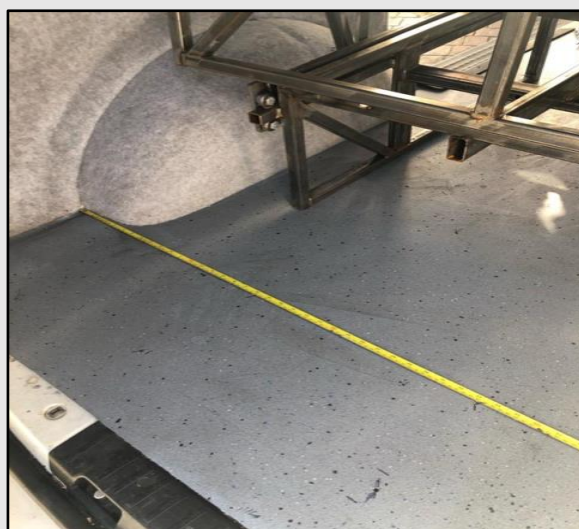
Thank you for purchasing an Essex Leisure Furniture Rock and Roll Bed, our guide includes the necessary details to ensure fitting is a straightforward process. (Instructions refer to beds manufactured after 17th January 2021)

Tools required:

- Cordless drill with 5mm and 12mm drill bits
- Phillips Screwdriver
- Straight edge
- 8mm, 10mm and 19mm socket spanners

Instructions to fit VW T5/T6 RocknRollBed-102cm, instructions assume bed will be located with **rear cushion close to rear doors** and narrow tapered **rear cushion fitted to bed**.

1. Remove the spare wheel from under the vehicle using a **19mm** socket or spanner and set aside.
2. Remove the plastic cover above the spare wheel using **8mm** and **10mm** sockets – there is also a torque bit screw holding the bumper bracket on one side.
3. Inside the vehicle run a straight edge from the rear of one wheel arch to the rear of the other



4. Draw a pencil line on the wheel arch side of the straight edge (bed can be located forward of this line, if required, by fixing through floor plan).

5. For optimum installation fit without upholstery, for easier installation fit upholstery before placing bed in vehicle.
6. Position Rock and Roll Bed in your vehicle with the pencil line running through the **middle** of the front brace of the bed.
7. Position the **bottom left corner** of the rear cushion panel level with the **corner of the vehicle**, ash shown here. When fitted, the cushion should be close to the rear door, inside the recess. Allow approximately 10mm gap to the corner of the frame.



8. Ensure the bed is still positioned along the pencil line and using a 5mm drill bit drill a pilot hole in the front left pre-drilled 12mm hole. Check under the vehicle to ensure the hole is central of the beam that runs across the vehicle (above where the spare wheel is kept).
9. If correct, do the same for the front right hole (fixings located to miss spare wheel)
10. If you have purchased the M1 cross beam, fit it now. Simply place over the beam of the van and hold up with either a Jack or Axle stand. Drill one 10mm hole at a time, then place the blind bolt (supplied) in the hole. Hit the end of the bolt with a hammer to open the end and tighten up the nut. Follow the same procedure with each hole in turn, finishing with a final tighten and check of all the nuts.
11. Using a 12mm drill bit, drill through floor plan and M1 cross beam (if purchased) through both holes of the front brace. Note - Use slower drill speeds for drilling larger holes.

12. Put the 12mm bolts through the holes and tighten the nylon nuts and washers from underneath. You may need someone to hold a spanner firmly inside the vehicle for you to make this easier.
13. You can now drill the holes in the rear brace using the 12mm drill bit.
14. Drop the 12mm bolts in the holes and use the 120mm spreader plates (supplied) underneath, and Nylon nuts secure the bed to the vehicle.
15. Replace all covers and the spare wheel.

Instructions to fit Upholstery,

1. If you have purchased upholstery, this can be fitted before or after installation, though it is easier to fit the seat and seat back cushions before placing the bed in the vehicle. If you have not yet purchased upholstery you can purchase direct from our supplier at www.camperandcarinteriors.co.uk.
2. Pull out seatbelts and tuck behind the frame (This is also a good trick for obtaining a good night's sleep).
3. Drill a minimum of six 5mm holes in each of the three sections of the bed frame, try to avoid the curved top section of the rear two sections as these will be visible when completed.
4. Place the centre cushion on the frame. The cushion will fit the size of the frame (if purchased from us) with 8cm overhang on the wheel arch side. Place the cabinet side of cushion level with the frame or with a slight overhang. The majority of the overhang of the cushion will be on the wheel arch side (102cm frame). You will want about a 20mm gap on the wheel arch side as well, if possible, when installed to allow for the seatbelt, vehicles do differ due to vehicle lining and carpeting.
5. There will be up to an 8cm overhang on the wheel arch side and not much, if any, on the cabinet side. This is normal, and seat belts are fitted off centre of the frame to allow for this. This is because we have to allow for different builds as well as a safe finger gap on the wheel arch side. There can be as much as 5cm difference in vehicle linings etc.

6. Place the seat cushion on next and line up carefully. Time spent now will ensure a perfect fit.
7. Using 50mm screws put one on each side of each section and tighten into the bed board. This can be a little tricky as there is not much room but doing so in the van will ensure a good fit against the cabinets and side wall.
8. Fit your rear cushion last; you may have to push cushions into each other to lessen the gap ensuring a good night's sleep.
9. Close bed and inspect the fit, using 4inch cushions (9mm boards and 3.5inch foam works best) and will leave very little gap both in bed and seat position.
10. Using 50mm screws to finish attaching upholstery to the frame.
11. Replace seat belts.

Your bed should now be fitted and ready for use.

Happy Camping